



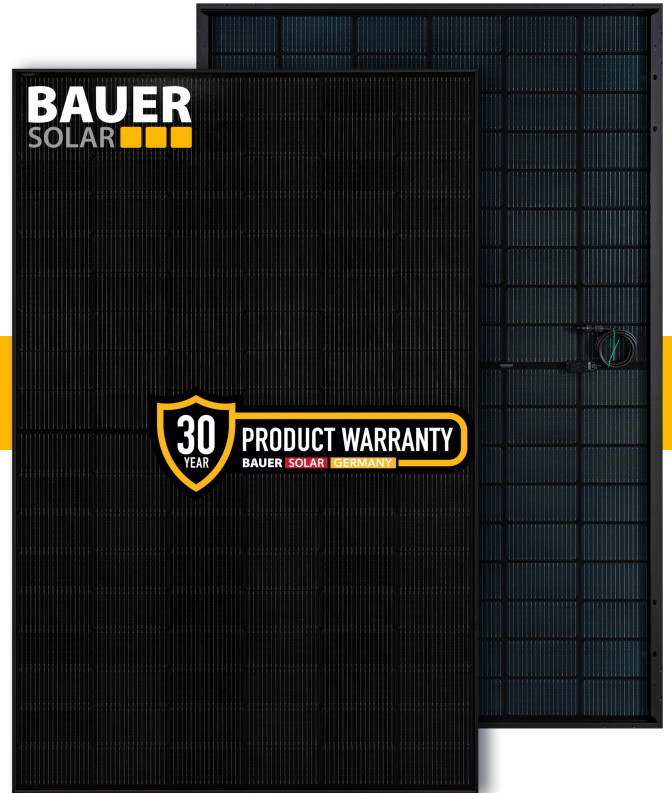
TOP CON N-TYPE M10

BAUER SOLARTECHNIK

# SUPERBLACK

BS-108M10HBB-GG 420 - 430 W

BIFACIAL GLASS-GLASS HALF-CELL MODULE



### GRADE "A" N-TYPE BIFACIAL HALF CELLS

Only Grade "A" half-cells are used in the production of all BAUER solar modules and only the blackest are selected. Up to 30% increase in yield through bifacial cells active on both sides and a glass backside.



### LOW LIGHT PERFORMANCE

Stronger performance in low lighting conditions than PERC modules, such as overcast days, mornings and evenings helping to ensure a higher energy output than PERC every day.



### STABILITY & DURABILITY

2 x 2 mm tempered anti-reflective solar glass; dirt-repellent, scratch-resistant, durable and shock-proof.



### CERTIFICATION

Constant in-house quality controls - certified several times over by accredited inspection bodies.



### FIRE CLASS A

Maximum fire protection through double glazing according to the highest security requirements.



### WARRANTY & GUARANTEE

30 year product warranty and a linear performance guarantee over a period of 30 years.



### GERMAN GUARANTOR

If necessary, it is guaranteed that a German company takes over any claim settlements.



### REINSURANCE COVERAGE

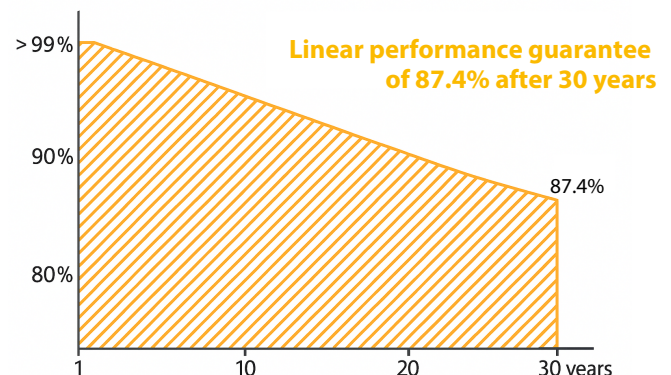
BAUER is re-insured with Munich RE for 15 years of the product warranty & 30 years of the performance guarantee.

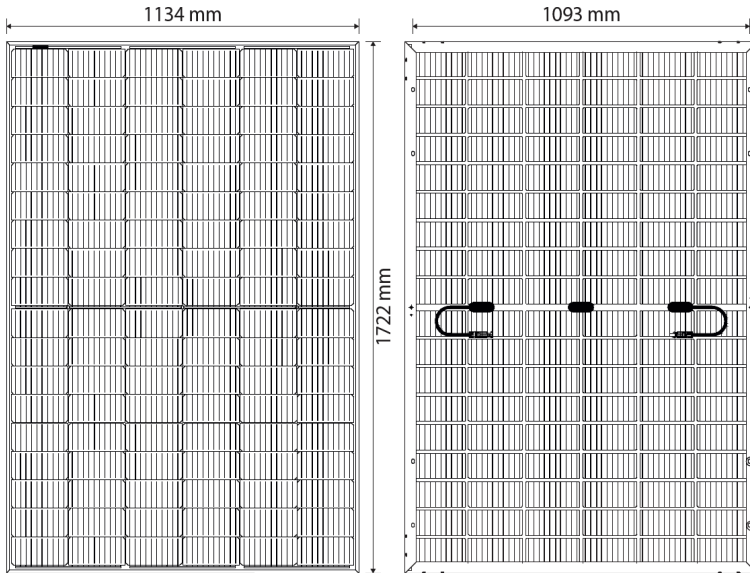


## BAUER GUARANTEE +

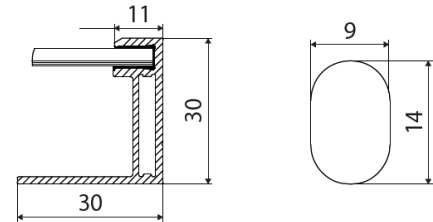
Our extended guarantee covers the module guarantee and a lump-sum compensation for the replacement of a defective module (Guarantee conditions as of 01.12.2023).

BAUER guarantees a minimum performance value of 87.4% after 30 years for the **SUPERBLACK** glass-glass solar modules.





BAUER SOLARTECHNIK  
**SUPERBLACK**  
BS-108M10HBB-GG 420 - 430 W



**WARRANTIES<sup>1</sup>**

30 year product warranty

30 year performance guarantee

**OPERATING CONDITIONS**

Operating temperature -40 to 85°C

Static load 5400 Pa (snow/wind/ice)

Hail test Ø 25 mm at ~ 23 m/s

**CERTIFICATION**

IEC 61215,61730-1/2,61701 (Salt mist),62716(Ammonia)  
CSA; Fire Class: A (IEC); (USA) Type 29

**PACKAGING**

Modules per pallet 35

Pallets/modules per truck 26/910

**PHYSICAL SPECIFICATIONS**

Module dimensions	1722 x 1134 x 30 mm
Weight	24.7 kg
Frame	Black anodized aluminum profile
Frontside	AR-coated heat-strengthened glass, 2 mm
Embedding material	EVA
Backside	Black-glazed & heat-strengthened glass, 2 mm
Solar cells	108 monocrystalline N-type bifacial half-cells
Bifaciality	80 % ± 10 %
Junction box(es)	IP68, 3 bypass diodes
Cable & connector	4 mm <sup>2</sup> , 1300 mm, Stäubli MC4/EVO2A

**ELECTRICAL CHARACTERISTICS<sup>2</sup>**

		BS-420-108M10HBB-GG	BS-425-108M10HBB-GG	BS-430-108M10HBB-GG
Maximum power	P <sub>max</sub> (W)	420	425	430
Power output tolerance	P <sub>max</sub> (%)	0 ~ +3	0 ~ +3	0 ~ +3
Open circuit voltage	V <sub>oc</sub> (V)	38.27	38.56	38.84
Short circuit current	I <sub>sc</sub> (A)	13.65	13.70	13.75
Voltage at maximum power	V <sub>mpp</sub> (V)	32.38	32.64	32.88
Current at maximum power	I <sub>mpp</sub> (A)	12.97	13.02	13.08
Module efficiency	η <sub>m</sub> (%)	21.51	21.76	22.02
Bifaciality performance increase*	10 % P <sub>mpp</sub> (W)	462 (+40)	467.5 (+42.5)	473 (+43)
	20 % P <sub>mpp</sub> (W)	504 (+84)	510 (+85)	516 (+86)
	30 % P <sub>mpp</sub> (W)	546 (+126)	552.5 (+127.5)	559 (+129)
Nominal operating cell temperature	NOCT (°C)	45 +/- 2		
Temperature coefficient of Voc	Tk (Voc)	-0.26 %/°C		
Temperature coefficient of Isc	Tk (Isc)	+0.046 %/°C		
Temperature coefficient of Pmpp	Tk (Pmpp)	-0.30 %/°C		
Maximum system voltage DC (TÜV)	(V)	1500		
Maximum series fuse rating	(A)	30		

<sup>1</sup>Nominal value is specified in the written warranty conditions. A possible light-induced degradation in performance is not taken into account.

<sup>2</sup>Values under Standard Test Conditions (STC): air pressure 1.5 AM, irradiance 1000 W/m<sup>2</sup>, cell temperature 25°C. STC measuring tolerance: ±3 % (P<sub>max</sub>), ±10 % (V<sub>max</sub>, I<sub>mpp</sub>, V<sub>OC</sub>, I<sub>SC</sub>). The beneficiary under the reinsurance policy is solely Bauer Solar Engineering GmbH. Please contact us to get information on how this insurance coverage benefits you as a customer.

Note: please read the installation manual before using this product. Subject to change.

© 2024 Bauer Solar Engineering GmbH. Effective: 01/12/24.